



# Gifford Park's Pride

*Gifford Park Neighborhood: A Great Place to Live, Work, Learn and Play*  
[www.giffordparkomaha.org](http://www.giffordparkomaha.org)

November 2009

A Publication of the Gifford Park Neighborhood Association

## Steady Progress At Yates

Neighbors might have noticed the improved curb appeal of Yates in the recent months. With the tall chain link fence and portable classrooms removed from the front yard, much more of the historic building is visible. Two gardens have also been installed on the grounds, and plans are underway for a new playground in the back of the building. The district's commitment to the building is visible.

In the face of the educational shake-up involved with the Leaning Community, OPS has continued to design programs at Yates that offer flexible learning for a broad group of students. The principal of Kellom Elementary, **Eric Nelson**, commented that the two pre-K classrooms currently at Yates fill in for the limited pre-K capacity at Kellom. OPS is currently evaluating the option of adding two more Pre-K classrooms for a total of four. **Susan Higginson** with OPS also commented that Accelerate courses are offered upstairs for older students in situations that require more focused, condensed educational opportunities.

OPS continues to see the building as an asset to the neighborhood and welcomes community use. Self-defense courses for women, tax assistance, and community garden meetings are examples of how Yates is already serving this function.

*by Stuart Shell*



*The ghouls were out in force at the GPNA-PKA Annual Haunted House this year. For a recap of the event, please see page 4.*

**Next General Meeting**  
**Thursday, November 12**  
**7:00 P.M.**

**Election of Officers for 2010**

**Guest Speaker: Representative**  
**from Midtown Crossing Prairie Life**  
**Fitness**

**Creighton University**  
**Medical Center**  
**Morrison Seminar Room**

**Board Meeting**  
**November 19th**  
**at the Flint's**



**21st Annual**  
**GPNA Holiday**  
**Banquet**

**Thursday, December**  
**10th 6:30 PM**

**Creighton University Medical**  
**Center - Betic Dining Room**

**You must be a current member to**  
**attend - memberships taken at the**  
**door. Please bring canned food for**  
**the Food Bank**

**RSVP: To Dana Carlton-Flint at:**  
**Designwyim@yahoo.com or 346-4575**

**GPNA OFFICERS****PRESIDENT**

Dana Carlton-Flint\* 346-4575

**VICE PRESIDENT**

Stuart Shell 216-1235

**SECRETARY**

Jill Westfall\* 213-3105

**TREASURER**

Jackie Foster\* 551-3629

**BOARD MEMBERS****AT LARGE**

Justin Brown\* 932-5932

**AT LARGE**

Luther Larson\* 330-3286

**BUSINESS**

Martin Janousek\* 558-4070

**LANDLORD**

Chris Foster 342-6006

**GARDEN LIASON**

Dana Freeman\* 850-9611

**COMMITTEES****COMPLIANCE/PARKING****VIOLATIONS**

Leo Wilwerding 345-1433

**HISTORIAN**

Eva Swanson 345-1707

**HOLIDAY BANQUET**

Jean Peck 344-0722

**MEMBERSHIP**

Stuart Shell 216-1235

**NEWSLETTER**

Sue Wilwerding 342-2795

**NEWSLETTER DISTRIBUTION**

Chris Foster 342-6006

**PARK**

Sandy\* &amp; Roger Freeman 557-2914

**PUBLIC RELATIONS**

Dana Carlton-Flint 346-4575

**WATCH GROUP**

Terry Wilwerding 342-2795

**WEEDS & LITTER**

Jim Wilwerding 551-1344

**WELCOMING**

Julie Kalkowski\* 342-2103

\* denotes new officer, board, or committee member

**Editor's note:** If you have something that would be of interest to our neighborhood, we encourage you to submit an article for our monthly newsletter. Editorials must be approved by the GPNA Executive Board. Articles can be mailed to P.O. Box 31462 Omaha, NE 68131; please include your name and phone number. Contact Sue Wilwerding (342-2795) or Chris Foster (342-6006).

**President's Column**

What does the holiday mean for those of us in Gifford Park? Is it a time to spend with family and friends? It is a time to reminisce about the year gone by or is it a time to be looking to the future? Well for the GPNA it is definitely a time to be looking to the future. 2010 is going to bring more opportunities to Gifford Park. Grants are being written for the Youth Garden program, the Teen Garden program, additional lighting, the Tennis Program, and a few others. Committees are being assembled and committee members are needed for welcoming, calling, fund raising, and business outreach. GPNA is going to look at the programs and events that we currently put on and how they service our members. We are looking to change it up a little in 2010! So if you have an idea or a talent that we can bring into the new year let us know...after all we are here for you! So as you ponder what the holidays mean to you know that the GPNA board will be looking to the future and all that it has to bring in 2010!!!!

Don't forget to attend the next General Meeting on **November 12th** (see front page for time and place). We need a quorum for the election of officers; the following is the slate that will be presented to the members:

**President: Dana Carlton-Flint****Vice-President: Stuart Shell****Secretary: Jill Westfall****Treasurer: Jackie Foster**

The following board members have agreed to remain on the board in the following positions:

**Business Representative: Martin Janousek****Landlord Representative: Chris Foster****Member at Large: Luther Larson****Garden Representative will be incoming Garden Director Diane Kaye**

A second Member at Large seat will need to be filled.

Thanks to everyone that has served in 2009!!

*by Dana-Carlton Flint*

PS The representative from Prairie Life Fitness will have passes available to distribute at the November meeting. Also, please note: there will be no board meeting in December and no general meeting in January.

**Trees Omaha Fall Planting Workshop**

The Gifford Park Neighborhood Association will host a **Trees Omaha** planting workshop on **Saturday, November 14**, from **10 am to 12pm** in **Gifford Park**. Trees Omaha is coordinated by the **Nebraska Statewide Arboretum** and is dedicated to improved nursery production, tree planting, and sustainable tree care. We will plant two varieties of oak trees grown under improved root production methods. Bring your shovel and dress for outdoor work and good times with fellow tree planting friends. Gifford Park Neighborhood Association is a 2009 Trees Omaha grant recipient.

The workshop will only be canceled if there is snow on the ground. Call **Cynthia Shuck, 556-2090, Jack Phillips, 571-7460** or **Justin Evertson at (402) 472-5045**.

Trees Omaha is partially funded by the **Nebraska Environmental Trust** and works to advance the goals of **ReTree Nebraska**, including the planting of at least 1 million high-quality trees by 2017.

## First Midtown Crossing Business Opens Its Doors

Soon the lights will dim and the screen will flicker to life at **Marcus Midtown Cinema**. Marcus Theatres has announced that the five-screen theater will open on Friday, Nov. 6, making it the first Midtown Crossing venture to open for business.

A highlight of the theater's grand opening will be an exclusive week-long run of the film "Lovely, Still", written and directed by Omaha native **Nicholas Fackler**. The film stars Academy Award-winning actors **Martin Landau** and **Ellen Burstyn** and was shot entirely on location in Omaha. Fackler and Landau will answer audience questions at 8:00 p.m. before the 9:15 p.m. film screening on Nov. 6.

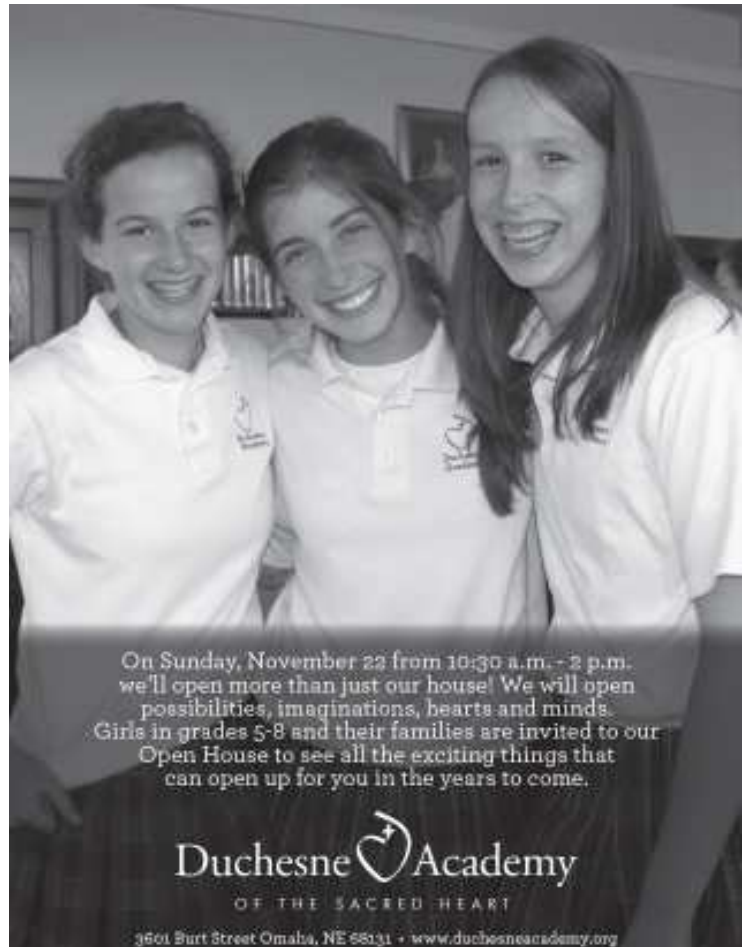
Offering in-seat dining and beverage service in each of its five auditoriums and a special VIP balcony in one theater, Marcus Midtown Cinema is unique to the Omaha market.

"Omaha's newest entertainment destination will 'wow' guests with innovative dining concepts, the finest amenities, exquisite décor and the latest digital cinema technology, including digital 3D," said Marcus President **Bruce Olson**. "The Marcus Midtown Cinema brings together the better of two worlds - CineDineSM in-theatre dining combined with a state-of-the-art movie theatre. The dining and movie complex also includes two sophisticated urban cocktail lounges, a striking four-story glass façade with breathtaking views of the Midtown skyline and Turner Park, meeting and event space, full catering service and an awe-inspiring atrium with upscale finishes and architectural detailing."

The theater's two new cocktail lounges, **Glo** and **Vue**, will also open on Friday, Nov. 6.

Marcus Midtown Cinema's auditoriums also include traditional seating for moviegoers who do not wish tableside food and beverage service. The theatre level has a main box-office and traditional concession stand featuring self-service beverages as well as a two-story atrium with relaxing music from a baby-grand piano in the spacious lobby.

*by Luther Larson*



## Helping The Community Garden One Dime At A Time!

We are pleased to announce that **Whole Foods Market Omaha** has selected Gifford Park Community Garden as the beneficiary of its **One Dime at a Time** community outreach program for October, November, and December 2009! For each bag reused at checkout, Whole Foods shoppers can choose to receive the \$0.10 refund as cash back on their grocery bill or donate the sum to the Gifford Park Community Garden. We encourage you to grab your reusable grocery bags, visit Whole Foods Market Omaha (**10020 Regency Circle**), and give your \$0.10 refund to the Gifford Park Community Garden over the next three months. Tell all your friends to do the same! Your generous support will help sustain and grow our adult and youth gardening programs for Midtown families. Together, we can make a difference One Dime at a Time!

*by Dana Freeman*

**Be a good neighbor -  
please rake your  
leaves!**



**Happy Thanksgiving!**

**From the Gifford Park  
Neighborhood Association**



## Charles R. Kilgore Jr. Attorney At Law 4913 Underwood Avenue

558-5000



### Haunted House Huge Success

Friday, October 30th, was perfect weather for the fifteenth annual **GPNA - Pi Kappa Alpha Haunted House**: chilling with a full moon! 145 costumed kids and parents took their chances walking through the historical mansion that serves as PKA's home. Those making it out of the house had a nice treat thanks to the generosity of **Jan Franks, Jim Wilwerding, Dana Freeman, & Sallie Foster**. Other volunteers included **Stuart Shell, Jackie Foster, Bob Hutton, Darryl Hutton, Tyler White, & Jaquan Nance** (voted "Most Effective at Scaring" by numerous shrieks and screams of terror). PKA organizers **Connor O'Neil** and **Marty Althoff** did an outstanding job preparing the house and went to great lengths to make sure everyone received only as much haunt as they could handle.

*by Stuart Shell*

### Thanks, Officer Wiley!

The GPNA wishes to recognize Officer **Robert Wiley** for his excellent efforts over the past several years in dealing with crime in the Gifford Park neighborhood. He works with the neighborhood association and residents to identify and deal with a variety of problems. Officer Wiley routinely exhibits dedication, leadership, and creativity in helping to address crime problems we experience, and demonstrates that good police activity in our area can have a profound positive influence on the quality of life of our residents. Thanks Officer Wiley for your efforts!

*by Chris Foster*

### Traffic Note - 30th Street

According to the **Nebraska Department of Roads**, **30th Street** will be closed from **Cass St. to Dodge St.** for bridge demolition from **8:00pm on November 6** and remain closed until **6:00AM Monday, November 9th**, so the two Highway 75 bridges over 30th Street can be demolished. This will be a weather-driven event, so please be aware of the scheduled closing and monitor the area for posted detour signs.

**Now Open!**

**Coin Laundry**  
33<sup>rd</sup> & California St  
(behind Selena's Grocery)

Open daily • 6am – 10pm

- All new equipment!
- **Huge** capacity washers and dryers!
- **\$1 buys 35 minutes** of dry time - almost 3 drying minutes per quarter!
- Vending, A/C, Flat Screen TVs, Video Games & Free Wi-Fi



*Enjoy WASH specials all day long!*

- **\$1.00** wash dbl loaders
- **\$1.00 OFF** all 35, 40 & 60 lb washers

**Ahora Abierto!**

**Lavandería**  
33<sup>rd</sup> & California St  
(enfrente de Selena's Grocery)

Abierto diario • 6am – 10pm

- Todos los **nuevos** equipos!
- **Lavadoras y secadoras** extra grandes
- **\$1 compras 35 minutos** de tiempo de secado - casi 3 minutos de secado por 25¢!
- Bocados, A/C, juegos de video, TVs & Wi-Fi gratis



*lavado especiales durante todo el día!*

- **\$1.00** máquinas dobles de la carga
- **Ahorras un \$1.00** en las lavadoras grandes

### Dundee Safety Patrol's Actions Considered Heroic

The GPNA would like to congratulate **Nicole White** for an act of heroism at her school on Friday, October 30th. Nicole is the 10 year-old daughter of **Roy** and **Dina White**, who both grew up in the Gifford Park neighborhood. The fifth grader, who attends Dundee Elementary School, is on the Safety Patrol there. During Dundee's Halloween parade through the neighborhood, Nicole saved a 2nd grader from being hit by a car. The child didn't notice that everyone else had stopped and he stepped out into the street, unaware that a car was turning straight into his path. Nicole, whose Safety Patrol training "kicked in", reached out and grabbed the child and pulled him back to safety. Two of the teachers who witnessed this incident said that without her quick thinking, the child would surely have been injured or worse. Keep up the good work, Nicole!

**Ben's Yard Work & Landscaping**  
Raking, Snow Shoveling, and More!

Call Ben Spahn 686-8079

He lives in Gifford Park



**Look what's happening at . . .**  
**A.V. Sorensen Community Center**  
**4808 Cass Street \* 444-5596**

### Facility Hours

Monday – Thursday 8:30 – 8:30 p.m.  
 Friday 8:30 – 5:00 p.m.  
 Saturday 8:30 – 12:00 p.m.

### Tots & Parents

#### **Gym Time**

\$1.00 Drop in fee  
 Thurs. 10:30 a.m. – Noon  
 Age 5 & under with a parent

### Youth Pick up Dodge ball FREE

Tuesdays 6:45 – 8:00 p.m.  
 Wednesdays 4:00 – 5:00 p.m.

### Babysitting Workshop

For many young teens, babysitting is their first job and the beginning of habits that will last a lifetime. This workshop is an outstanding introduction to babysitting. 2nd Saturday of each month. 1:00 pm – 4:00 pm  
 Students must be 11 years old before Sept. 1  
 Contact **Nisha** at **315-3585** for more information.

### Santa Paws is Coming to Town

Saturday, December 5<sup>th</sup>  
 9:00 a.m. – 11:00 a.m.  
**Ho! Ho! Ho!** Pet photo's with Santa! Bring Your paws or claws and take a picture with "Santa Paws" This is a great photo opportunity for you and your pet.  
 What a memorable Christmas card! Please bring your own camera.

### School's Out – Sports Camp

Monday, December 21<sup>st</sup>  
 11:00 a.m. – 3:00 p.m.  
**Ready to get your game on?** Your sports fanatic will love this one day camp. Basketball, badminton, dodge ball and more. Fun games, challenging environment.  
 Boys and girls welcome. Participants must bring a sack lunch.  
 Limited space register early!

-----  
 Visit us on the Web!  
[www.ci.omaha.ne.us/parks](http://www.ci.omaha.ne.us/parks)

## **California Tacos & More**

*Homemade Mexican Food*

**342-0212**

**33rd & California Street**

**Dine In or Carry Out**

**Hours:**

**Monday - Saturday: 11a.m. - 8 p.m.**

**Closed Sunday**



## **Midwest Franchise Seminar To Be Held At Midtown Crossing**

“Get into Business for Yourself, Not by Yourself” is the theme for this comprehensive seminar offering franchise education, resources and networking opportunities with franchisors seeking to provide business opportunities on Thursday, November 12, **2009** at **Marcus Theatre at Midtown Crossing (3201 Farnam St).**

Who should attend? Anyone interested in franchise business opportunities, services and resources. Whether you want to start a business, have a business, but want to learn more, or want to attract franchisees to your community, the Midwest Franchise Seminar is for you!

You'll hear from franchise business experts including executives of leading brands including Dunkin' Donuts, Supercuts, Maid-Rite and Home Instead, just to name a few. Breakout sessions will cover how to get started, the financials of franchise operations, legal aspects of franchising, panel discussions with franchisees and franchisors and much more!

The cost for this information-packed event is just \$100. The price includes daylong education and networking opportunities, continental breakfast, lunch and admission to the trade fair and reception. Franchise opportunities start as low as \$25,000. Financing sources will be available at the event.  
 Contact **Rena Connolly** at **rconnolly@selectgreateromaha.com** or **(402) 978-7943** with attendee questions or **Megan Blazek** at **mblazek@selectgreateromaha.com** for exhibitor information.

**Thanks to those who  
 served our country  
 Veterans' Day  
 November 11, 2009**



## What's Happening In the Neighborhood . . .

The **Omaha Tennis Association** (OTA) awarded **Chris Foster** the Outstanding Contributor to USA Youth Tennis Programs Award for 2009. Chris shares this award with the many volunteers who helped with this year's May Gifford Park Tennis Block Party, summer youth lessons, August youth program, and fall lessons. Also many thanks to the **OTA Development Fund** for awarding seven junior scholarships totaling \$770 to participants of the Gifford Park Youth Tennis Program. The funds help pay for 10 weeks of indoor tennis lessons this fall at Hanscom Tennis Center for youth who demonstrated good sportsmanship and a committed interest to improve their tennis skills. Eight Gifford Park Youth Tennis participants are participating.

Congratulations to Gifford Park's own **Roy White** for finishing the Omaha Marathon in a great time of 3 hours 10 minutes. Other remarkable statistics about Roy's performance: overall place: 22 out of 459; age 45-50 division place: 3 out of 40; mile pace: 7 minutes 16 seconds. Great effort, Roy!

Thanks to **Bob Hutton** for "winterizing" our water supplies and backflow preventers in the community garden and Gifford Park. This ensures water lines are blown and pipes won't break. Thanks Bob.

Neighbor **Roger Freeman** has been playing handball at the Downtown YMCA for awhile now and has started working on a program for youth with **Dale Bergren**. You can learn the game, practice your skills, get some exercise and hang out with some masters of the game. This program is free to any youth ages 7-16. Instruction and games are currently going on now and will be running through the first of the year. Space is limited so call Dale Bergren today to get the rest of the details and reserve your spot (**758-0634**).

**SNAP! Productions** is one of the first theatres in this region to get the rights to produce the Broadway bohemian rock musical "**RENT**". This much-loved musical comes to the SNAP! Productions stage on the heels of one of the longest runs in Broadway history, and will close the SNAP! Productions' 2009 season, performing **November 19 through December 13, 2009** at **3225 California St.** RENT is the story of a community of young artists struggling to make their mark in New York's rapidly changing East Village of the 1990s and is based on the classic Puccini opera **La Boheme**. Tickets can only be purchased on-line at the SNAP! Productions' website: **www.snapproductions.com**. Tickets are \$20.00, general admission. There are no other discounts for this production. Call **402-341-2757** with any questions you may have about this performance.



Gifford Park Neighborhood Association (GPNA)

P.O. Box 31462, Omaha, NE 68131-0462



### Membership Application

\*Note: The GPNA membership year runs from June 1 through May 30.

Today's Date: \_\_\_\_\_

Type of Membership:  Single (\$10.00)  Family (\$15.00)  Business (\$25.00)

If Business, Name of Business: \_\_\_\_\_

Name: \_\_\_\_\_

Spouse: \_\_\_\_\_

Address: \_\_\_\_\_

Telephone: \_\_\_\_\_

E-mail Address: \_\_\_\_\_

VOLUNTEER OPPORTUNITIES I am interested in helping out with... (Circle Interests)

Cleanups	Newsletter Delivery	Community Garden	Easter Egg Hunt
Membership	Block Captain	Youth Garden	Spring Cleanup
Social Activities	History	Tree Planting	Fall Cleanup
School Liaison	Watch Group	Youth Activities	Neighborhood Walks
Tool Lending	Call Committee	Tennis Program	Holiday Banquet

**For City Services,  
Information, or  
Complaints  
Call: Mayor's Action  
Office  
444-5555**



**TOOL  
LENDING  
HOTLINE  
Chris 342-6006**

**Mowers - \$5  
Rent for most tools - \$3**

