



Gifford Park's Pride

Gifford Park Neighborhood: A Great Place to Live, Work, Learn and Play
www.giffordparkomaha.org

November 2006

A Publication of the Gifford Park Neighborhood Association

Fall Cleanup 2006 Highlights

We had an aggressive schedule for this year's Fall Cleanup held Saturday, October 14, in Gifford Park, even by GPNA standards, but with the help of a lot of dedicated people, we completed about everything we had hoped to get done. The day started out chilly with near freezing temperatures, but quickly warmed to over 60 degrees by afternoon with sunny skies. The cleanup itself filled three trash compactors (provided by **Dale's Trash Service**). The other events included the pumpkin patch (100 pumpkins given away – **Earl May Garden Center** gave us a good deal), pumpkin painting supervised by **Jan Franks** and her grandchildren **Brittney** and **Zach Rubek**, Police Officer **Robert Wiley** was on site to educate us about public safety, **Rodney Hay** with help from **Sue Wilwerding** provided us with great barbecue chicken, pork, and beans, **Loren Johnson** with **J'N'J Grocery** provided hot dogs, **Lilly Estes** from the **California Bar** provided pop and ice, we recycled a lot of metal and appliances, but only had one tire, we received many memberships and donations, **Rod & Dana Flint** supervised a crew on the west park to remove cockleburrs and weeds from the playground sand, weeded perimeter streets and sidewalks and raked leaves, & also weeded, mulched and planted 200 daffodil bulbs at the two park entrances on 35th Street. (Funds for the plant material and mulch for the two park entrances were provided by the 2006 Mayor's Neighborhood Improvement Block Grant). **John Barna** led the tree-planting effort near the benches on the north side of the park – this involved supervising many children and planting five weeping crabapple trees donated by **Keep Omaha Beautiful**. **Jim Wilwerding** provided the membership tent, **Diane Kaye** was a trooper at the membership table, **Roger & Sandy Freeman** and **Jackie Foster** supervised groups of youth to help pick up litter in the park and business district. Everyone who volunteered at the cleanup "earned" their free pumpkin and food. Thanks to Scout Master **Jim Detwiler**, Boy Scout Troop 31 had a great setup in the park for anyone interested in learning about scouting. **Kevin Smith** did a great job of pruning some of the older park trees. The **City of Omaha Parks Department** also delivered a load of mulch for us to spread around the newly planted trees. KOB and several residents donated all the yardwaste bags used to clean-up the upper park.

continued on page 4

Next General Meeting
Thursday, November 2

7:00 P.M.

**Topic: Combined Sewer
Overflow Project**

**Creighton University Med Center
Morrison Seminar Room**

Executive Meeting
Thursday, November 16

7:00 P.M.

**Via Christie
36th & California**

Plans Under Way For 18th Annual GPNA Holiday Banquet

The 18th Annual GPNA Holiday Banquet will be held on **Thursday, December 7**, at 7 p.m. **Creighton University Medical Center** will once again host this traditional event that ushers in the holiday season for GPNA members. Since this is a members-only function, now is the time to join or renew your membership - send in the application on this page with your dues or bring it to the November general meeting. Look for more information on the banquet in next month's newsletter.

**Don't Forget To
VOTE!**
Election Day
Tuesday, November 7



GPNA OFFICERS

PRESIDENT

Cynthia Shuck 556-2090

VICE PRESIDENT

Rodney Flint 346-4575

RECORDING SECRETARY

Open

TREASURER

Dana Carlton-Flint 346-4575

SERVICES

COMMUNITY GARDEN

Chris Foster 342-6006

COMPLIANCE

Leo Wilwerding 345-1433

HISTORIAN

Eva Swanson 345-1707

KELLOM SCHOOL LIAISON

Jean Peck 344-0722

MEMBERSHIP

Chris Foster 342-6006

NEWSLETTER

Sue Wilwerding 342-2795

NEWSLETTER DISTRIBUTION

Chris Foster 342-6006

PARK

Roger Freeman 557-2914

PARKING VIOLATIONS

Leo Wilwerding 345-1433

PUBLIC RELATIONS

Chris Foster 342-6006

TOOL LENDING

Chris Foster 342-6006

WATCH GROUP

Terry Wilwerding 342-2795

WEEDS & LITTER

Jim Wilwerding 551-1344

WELCOMING

Dana Freeman 850-9611

From The President . . .

New Trees in Gifford Park

Check out the new trees planted by **Indian Creek Nursery** in Gifford Park. With a Community Enhancement Program's 80/20 match grant provided by the **Nebraska Department of Roads** through the **Nebraska Statewide Arboretum**, GPNA planted 13 new trees a day ahead of the annual fall clean-up in Gifford Park. We planted the following trees: three honeylocust near the sledding hill, one replacement white oak, three lindens along 34th Street, three baldcypress south of the tennis courts, three redbuds and two golden glory dogwoods just east of 35th Street. Many thanks to Indian Creek Nursery for participating and to **John Barna** and **Pat Slaven** (City of Omaha staff landscape architect) for helping me put together the project.

Clean Solutions For Omaha

Omaha Combined Sewer Overflow (CSO) Control Program has a new name: **Clean Solutions for Omaha**. The Basin Advisory Panel (area stakeholders) needs information of the following type to report to our Burt-Izard basin engineer, HDR, Inc.:

- Unreported Sewer Back-ups
- Unreported Street Flooding
- Unreported Manhole Cover Problems
- Planned Developments

For concerns, questions or to report any of the above items contact **Ellen Fitzsimmons** at **399-1423** or me at **556-2090**. Please limit reports to areas within the Burt-Izard basin (maps available at www.omahaCSO.com)

Midtown Neighborhood Alliance

Midtown Neighborhood Alliance is seeking partners, specifically those who are not affiliated with established neighborhood associations in the area. This redevelopment will impact all Omahans, but it will have a significant impact on those who live, work, invest, and play in the area. MNA believes it is important to form a coalition of people who will be most impacted by the changes to our community, as well as those people who can assist us in identifying needs and priorities, and advocating for those needs. To participate, support or send concerns ~~and/or questions contact~~ **Vince Furlong** at **553-5644** or vfurlong@cox.net

*Editor's note: If you have something that would be of interest to our neighborhood, we encourage you to submit an article for our monthly newsletter. Editorials must be approved by the GPNA Executive Board. Articles can be mailed to P.O. Box 31462 Omaha, NE 68131; please include your name and phone number. Contact **Sue Wilwerding** (342-2795) or **Chris Foster** (342-6006) for information regarding the newsletter.*



12th Annual
Haunted House

Where:
PKA House
3100 Chicago St.



When:
Saturday, October 28th
Ages 10 & under: 6 p.m.
All ages: 6:30 - 7:30 p.m.

FREE!

hosted by:
Pi Kappa Alpha (PKA) Creighton Fraternity
Gifford Park Neighborhood Association

Schedule For Restore Omaha Conference Announced

Friday, November 3

7 - 10 p.m. OPENING RECEPTION
 Joslyn Castle - 3902 Davenport

Meet the speakers and exhibitors while viewing one of Omaha's architectural gems. (Cost = \$15)

Saturday, November 4

8 a.m. CONFERENCE (Cost = \$25)
 University of Nebraska at
 Omaha's Milo Bail Student
 Center
 62nd & Dodge St.

Registration. Exhibits, Bookstore, and Tool Areas open

9 a.m. Bob Yapp, Keynote Address
 Nationally known preservation
 consultant and PBS television
 host of *About Your House
 with Bob Yapp*

"Turning Historic Neighborhoods Around"

10:30 a.m. - 12:30 p.m. Exhibits, Bookstore, and Tool
 Areas open
 Lunch Available For Purchase
 in the Cafeteria (Cost = \$7)

Ask An Expert: 10:30 - 11:30 a.m. John Leeke
 11:30 - 12:30 p.m. Bob Yapp

12:30 - 5:15 p.m. Breakout Sessions

Sunday, November 5

9 a.m. - 1 p.m. HANDS-ON WORKSHOPS
 (Cost = 10 a.m. - Noon: \$20,
 9 a.m. - 1p.m.: \$30)
 Metropolitan Community
 College
 South Omaha Campus
 Industrial Training Center
 Just off Kennedy Freeway at
 27 & Q St.

1 p.m. - 5 p.m. MIDTOWN NEIGHBOR-
 HOOD TOURS ORGANI-
 ZED BY LANDMARKS
 INC. (Cost = \$5)

Properties in the Gifford Park, Joslyn Castle, and Bemis Park Neighborhoods are included

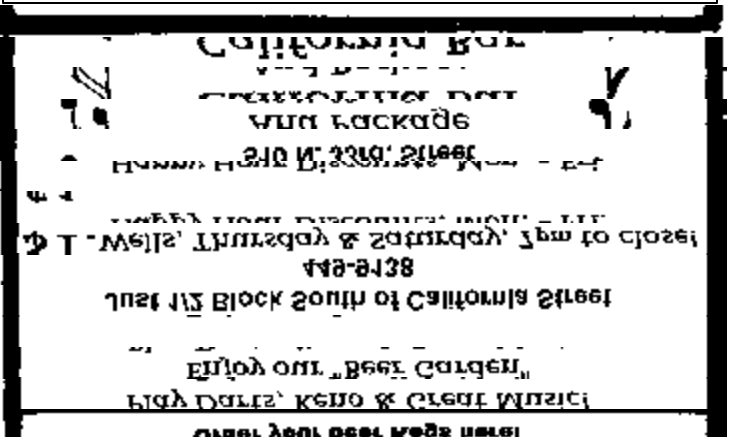
See www.restoreomaha.com for more information

Can You Help?

Do you love helping people? Would you like to help people in our neighborhood? A fun new volunteer position has opened up with **Creighton University Medical Center: Golf Cart Roundup!** In June of 2006, CUMC piloted a program where we had volunteers drive a golf cart around the parking lots of the hospital, picking up patient, families, and visitors from their cars and driving them up to the front of the hospital, dropping them off right at the front door. It was a big hit! So now we are looking to provide the service Monday through Friday from 8-4:30. This service is a HUGE blessing to people that have great difficulty walking, plus gives our volunteers an opportunity to chat and bring a smile to those who need it the most. We are doing everything possible to make things better for our patients and families. The golf cart will have flaps and be heated during the cooler weather.

Please join us in this great adventure! Even if you only have two hours once a week available, we want you! Please call our **Volunteer Office** at **449-4260** for an application packet. Thank you as we provide the very best service to our patients and families!

by Cheryl Morehouse



Charles R. Kilgore Jr.
Attorney At Law
4913 Underwood Avenue
558-5000

Personal Injury Law
 Worker's Compensation
 Injury
 Auto Accidents
 Insurance Claims

Fall Cleanup . . . *continued from page 1*

A very special thanks to the ten wonderful **University of South Dakota** students (see article on this page) who volunteered starting at 8 a.m. and worked until the end; we simply could not have gotten all the work done without their hard work and great spirit. And last but not least, GPNA President **Cynthia Shuck** did a great job of organizing and participating in most of the tasks you just read about; her leadership was outstanding on a very busy day.

The rest of our dedicated volunteers included: **Mike Caban, Ben Spahn, Tom Rose, Whelan family, Barfield family, Saavedra family, Hernandez family, Stanley family, Darryl Hutton, Lloyd Canfield, Wilwerding family, Rob Janousek, Martin Janousek, Chris & Sallie Foster, Neil Liberty, Richard and Bonnie Kaster, Eva Swanson, Eric McGee, Melvin Canfield, James Nordaker, and Shawn McWilliams**. And special thanks to the **Omaha Community Foundation** for funding the food Rodney cooks up and renting the garbage truck compactors - we cherish your commitment to our annual Fall Clean-up event which fuels a variety of interesting, healthy activities. A final comment: in all my years with the GPNA, I think this was one of the best events we have ever had. Thank you all!

by Chris Foster

University of South Dakota Students New Friends of GPNA

Alex Berke, Carla Laermanns, Kris Nuno, April Ahlers, Carlos DeLeon, Rene Nuno, Eric Tompkins, Deanna Smith, Marcie Gibbs, and Pa Dra Lee spent just one day in the Gifford Park neighborhood, but they made quite an impression and we gained new friendships with these dedicated students from the **University of South Dakota** who volunteered to help with two events on October 14 – the Fall Cleanup and the Community Garden Final Harvest. The students helped with a variety of tasks including tree-planting and pruning, bulb planting, litter pickup, trash hauling, pumpkin patch for kids, weeding, playground area cleanup, recycling, and community garden cleanup. Thanks to **Julie Kalkowski** who found shower facilities at **Creighton University** for the students to freshen up at the end of the day. Special thanks to **Alex Berke** who planned and organized the effort.



**Happy
Thanksgiving!**
From the Gifford Park
Neighborhood Association

**For City Services,
Information, or
Complaints
Call: Mayor's Action
Office
444-5555**



**TOOL
LENDING
HOTLINE**
Chris 342-6006

Mowers - \$5
Rent for most tools - \$3

Community Garden Final Harvest

After the Fall Cleanup ended many of the same volunteers were hard at it again in the afternoon of October 14th for a final harvest and garden plot cleanup in the community garden. Once again we had great help from the ten University of South Dakota students; they even provided pizza for everyone who helped! Thanks to all the community gardeners, parents, and youth gardeners who helped make quick work of putting the garden to bed for another year. Many thanks to **Kate Bodmann** who headed up the youth garden program this year. Also thanks to **Bob Hutton** who drained the water lines in preparation for winter.



**North Omaha
Ride To The Polls**

455-0276

Call and make a reservation

To volunteer vehicles or time:
e-mail - ridepolls@yahoo



A VIBRANT URBAN EXPERIENCE

SAVE THE DATE AND SPREAD THE WORD

Destination Midtown Community Forums

In keeping with Destination Midtown's focus on engaging the community in all facets of redeveloping the heart of Omaha, the group is hosting the following three community forums to discuss its 2007 action plan:

Monday, November 6, 6-8:30 p.m.

OPS Teacher Administration Building, 3215 Cuming St.

Wednesday, November 8, 6 - 8:30 p.m.

First Central Congregational Church, 421 S. 36th St.

Saturday, November 11, 8-10:30 a.m.

Field Club of Omaha, 3615 Woolworth Ave.

Attendees will receive an update on the implementation of the Destination Midtown master plan and engage in group discussions on neighborhood development, economic development, transportation improvements, and district promotion. Residents, business owners, and developers are encouraged to attend one of the forums.

California Tacos & More

Homemade Mexican Food

342-0212

33rd & California Street

Dine In or Carry Out

Hours:

Monday - Saturday: 11a.m. - 8 p.m.

Closed Sunday

California **Tacos & More**



J'N'J

GROCERY STORE

Fresh Meats -- Fresh Produce

Friendly Service



3301 California Street -- 422-1058

WE DELIVER!



7:00 AM - 10:00 PM Monday thru Thursday

7:00 AM - 11:00 PM Friday thru Saturday

8:00 AM - 10:00 PM Sunday

Saturday, October 14, 2006 - A Busy Day In Gifford Park



What's Happening In The Neighborhood . . .

The GPNA sends its best and heartfelt wishes for a speedy recovery to **Harry Dirgo**, who is recovering from a fall. Harry is a longtime resident of the Gifford Park neighborhood and is a past GPNA "Neighbor of the Year". Hope you're feeling better soon, Harry!

Many thanks to last month's guest speakers, **John McClelland**, Sr. VP of Administration at **Mutual of Omaha**, and **Keith Bawolek**, head representative of the project developer **ECI Investment Advisors**, who shared with us information about Mutual of Omaha's Redevelopment Project.

On October 26 the GPNA was recognized at the **Keep Omaha Beautiful** Volunteer Appreciation Awards for its efforts to help make the community a better place to live through the annual neighborhood cleanups. The awards luncheon was held at the UNO W.H. Thompson Alumni Center.

Just a reminder - yardwaste collection season will end the week of **November 27-December 1**. Yardwaste collection will resume again in the spring.

Snap! Productions Presents The Rise And Fall of Little Voice

The play **The Rise and Fall of Little Voice** is the story of a young woman who escapes life with her drunken, sniping mother by impersonating the vocal legends of the past. Her world is changed forever when a tacky nightclub impresario discovers Little Voice and tries to make her the star she never wanted to become. The play is the winner of the 1992 Evening Standard Best Comedy Award and the 1993 Olivier Award for Best Comedy. This gritty comedy will feature some of Omaha's best actors. The play will run from **November 16** through **December 10** at **3225 California St.** Curtain times are 8:00 p.m. Thursday, Friday, and Saturday; 6:00 p.m. on Sundays, except December 10, which is at 2:00 p.m.. There will be no show on Thanksgiving, Thursday, November 23. Reservations may be made by calling **402-341-2757** or on the SNAP! website: **www.snapproductions.com**. Tickets are \$15 for general admission; \$12 for students, senior citizens, and TAG members. The November 16th performance is a free preview performance benefitting the Theatre Arts Guild Scholarship program. Donations will be accepted at the door for this performance.



Gifford Park Neighborhood Association (GPNA)

P.O. Box 91462, Omaha, NE 68131-0462



Membership Application

*Note: The GPNA membership year runs from June 1 through May 31

Today's Date: _____

Type of Membership: Single (\$10.00) Family (\$15.00) Business (\$25.00)

If Business, Name of Business: _____

Name: _____

Spouse: _____

Address: _____

Telephone: _____

E-mail Address: _____

VOLUNTEER OPPORTUNITIES I am interested in helping out with... (Circle interests):

- | | | | |
|-------------------|---------------------|------------------|--------------------|
| Chairperson | Newsletter Delivery | Community Garden | Easter Egg Hunt |
| Membership | Book Club | Youth Garden | Boiling Cleanup |
| Social Activities | History | Tree Planting | Fall Cleanup |
| School Liaison | Wash Group | Youth Activities | Neighborhood Walks |
| Tool Lending | Cal. Committee | Lawn Program | Holiday Banquet |

**For City Services,
Information, or
Complaints
Call: Mayor's Action
Office
444-5555**



**TOOL
LENDING
HOTLINE**
Chris 342-6006

**Mowers - \$5
Rent for most tools - \$3**

